



Night work in Kingsgrove & Bexley North

Night work will be undertaken in sections of the road verge, on the M5 East between Bexley Road and King Georges Road to progress construction of the New M5 project in Kingsgrove and Bexley North.

What we're doing

Work will be carried out over four nights during the existing M5 East maintenance shutdown period from Sunday 21 October to Wednesday 24 October 2018 (weather permitting). These works will be undertaken outside of normal construction hours for the safety of workers and motorists. A map showing the location of the work is provided overleaf.

Activities for the October shutdown will include:

- North and south tunnel portal works including excavation work, piling, concreting and shotcreting
- Milling, resurfacing and asphaltting on road surface
- Service investigation, boreholing and tree removal to facilitate tolling gantry installation at the off ramp and on ramps located at King Georges Road Beverly Hills
- Potholing along southern shared user path at Bexley North to facilitate tolling gantry installation
- Service investigation to facilitate tolling gantry installation
- Piling, pile breakings and installation of tolling gantries
- Stormwater excavation / installation
- Concrete pavement construction
- Concrete saw cutting in relation to pavements and stormwater drains
- Signage removal and Installation of new signage
- CCTV inspection of stormwater drain
- Road sweeping
- Installation of concrete barriers
- Installation of temporary shipping container noise wall on the westbound side.

When

Sunday 21 October to
Wednesday 24 October 2018
(weather permitting)

Hours of operation

Work undertaken between
10:00pm and 4:00am

Where

M5 East between Bexley
Road and King Georges Road

For more information

Drop in to the Community
Information Centre

27 Burrows Road St Peters

9am to 5pm

Monday to Friday

We speak your language



Need an interpreter?

Call the Translating and
Interpreting Service on

131 450.

Notification No. 528

Equipment used will include excavators, lighting towers, concrete cutters, road sweepers, vacuum trucks, generators, cranes, elevated work platforms, oxy cutters, concrete agitators, hand drills, line markers and line removers, elevated work platforms, compressors, lighting towers, piling rigs, drill rigs and pumps as well as other construction vehicles.



Australian Government

BUILDING OUR FUTURE



Constructed by



How this affects you

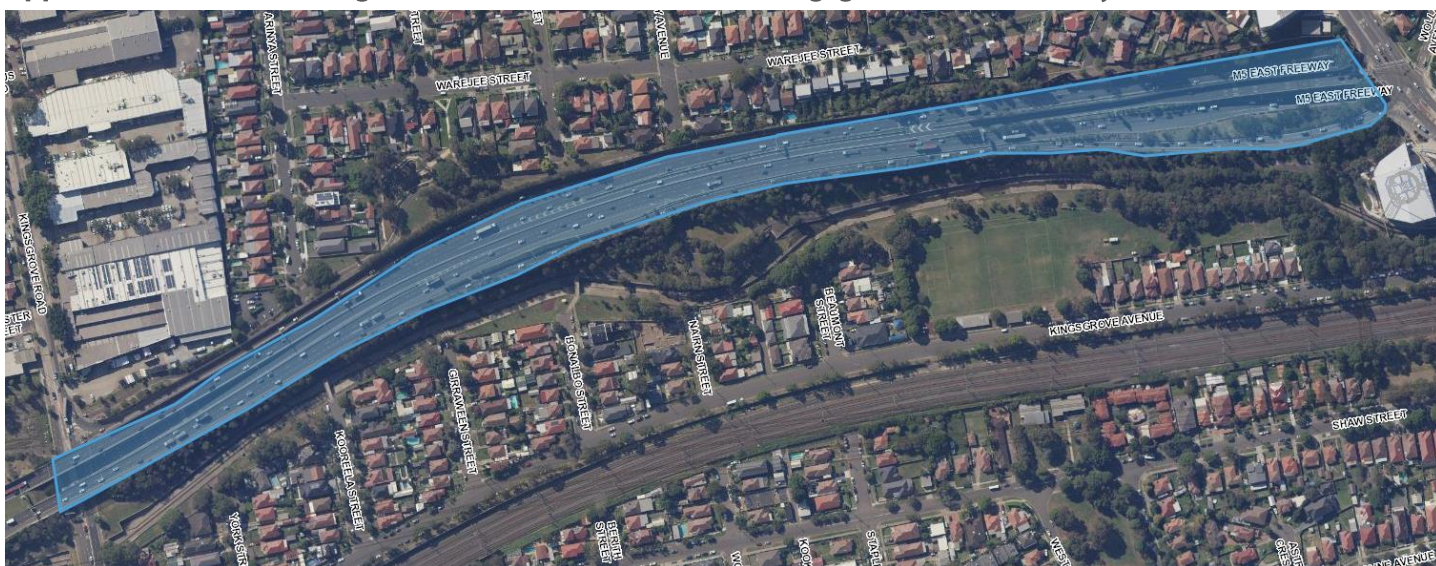
Some of this work will be noisy. Noise monitoring will be conducted for all work undertaken outside of standard construction hours. Any dust generating activities will be watered down to minimise dust. Traffic control and signage will be in place to assist road users through these changed traffic conditions.

This work is part of the New M5 project which will duplicate the existing M5 tunnel and double traffic capacity of the M5 East corridor. For more information, visit westconnex.com.au/NewM5

Approximate location of night works on the M5 East, from King Georges Road to Kingsgrove Road



Approximate location of night works on the M5 East, from Kingsgrove Road to Bexley Road



Community Drop-In Session

Residents and businesses are invited to a Community Drop-In Session on Wednesday 24 October from 5:00pm to 6:30pm. The New M5 construction team will be on hand to answer questions about current and upcoming work at Kingsgrove and Bexley. Residents are invited to drop-in at any time during the session

The session will be held in the pocket park along the shared pathway at the end of Glamis Street. In the event of poor weather, the session will move to the site office at 30 Garema Circuit Kingsgrove by emailing us at info@newm5.com.au.