



## Continuous weekend work at Sydney Park Roundabout Euston Road, Alexandria

Work has commenced to transform the Sydney Park Roundabout into a signalised intersection to allow for better traffic flow in the area. The first stage has involved upgrading and moving all existing utilities into the new road alignment to prepare for road construction. In order to complete this stage, seven weekends of roadworks at Sydney Park roundabout are required. **This notification refers to the third weekend of work only.**

### What we're doing

The work includes:

- Completing installation of a large and small water main and communications cables under the roundabout
- Installing new drainage down the centre of Sydney Park Road towards the roundabout
- Making preparations to remove two large oil tanks from underneath the roundabout

The activities will involve:

- Investigating the location of existing services
- Excavating a deep trench in the ground
- Installing new pipes, conduits and cables
- Reinstating the ground

### How this affects you

#### Traffic changes

There will be major traffic changes in place for the duration of this work. The changes will be similar to previous weekend work carried out at this location and will include:

- **Traffic will be directed though the roundabout one direction at a time. Drivers should expect queuing and delays**
- **Huntley Street will be closed westbound between Burrows Road and the roundabout**
- **Euston Road northbound remains closed between Campbell Road and Sydney Park Road**
- **A reduced 40 km/h speed limit will be in place around the roundabout and approaching streets.**

### When

Friday 13 April - Monday 16 April

### Hours of operation

9pm Friday to 6am Monday  
(continuous)

### Where

Sydney Park Roundabout  
Alexandria

### For more information

Drop in to the Community  
Information Centre

27 Burrows Road,  
St Peters NSW 2044

- 9:00am to 5:00pm  
Monday to Friday  
(excluding public holidays)

### We speak your language



Visit [westconnex.com.au](http://westconnex.com.au).

Need an interpreter?

Call the Translating and  
Interpreting Service on

**131 450.**

Notification No.388



Australian Government

**BUILDING OUR FUTURE**



Constructed by



Delays are expected so drivers should avoid Sydney Park Road and instead use Canal Road, Ricketty Street, Burrows Road, and Bourke Road. A map showing the expected traffic changes is shown overleaf.

## Noise impacts

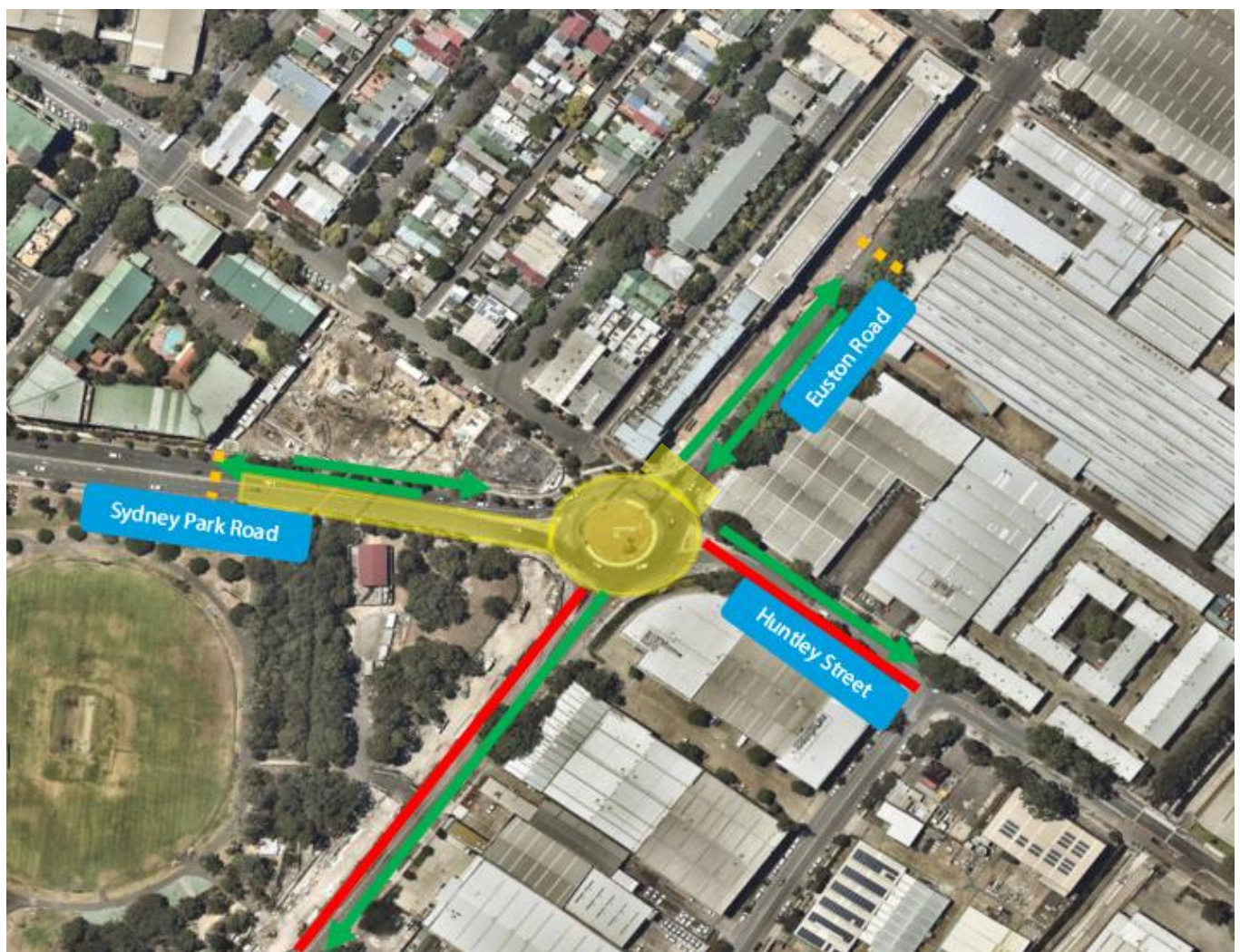
Equipment used for this work will include road saws, jack hammers, vacuum trucks, excavators, lighting towers, hand tools, generators, small crane, compactors, lights vehicles and traffic management.

This work is expected to generate noise. Residents who are expected to be highly impacted by noise from the work will be contacted directly by the Project to discuss respite options. The Project will further reduce noise generated at night from the work by:

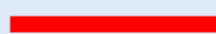
- Installing noise blankets around the work area
- Conducting noisier activities earlier in the night or daytime where possible
- Turning of vehicles when they are not in use
- Keeping conversations between workers and traffic control quiet

## Continuous work at Sydney Park Roundabout between Friday 13 April to Monday 16 April

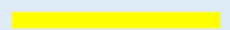
Map data © 2016 Google



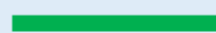
Traffic lane closed for duration of work



New M5 work area



Permitted traffic movements for the duration of the work



Traffic hold points. This is where vehicles will queue prior to entering the roundabout

