

8 September 2016

Investigation work – Unwins Bridge Road / May Street / Bedwin Road / Campbell Street intersection, St Peters

Work is underway on WestConnex which involves widening and extending the M4 and M5 and joining them to create a free-flowing motorway network.

As part of the project, the New M5 will duplicate the existing M5 East corridor, doubling vehicle capacity and easing congestion between St Peters and Beverly Hills. It will include twin tunnels, an upgrade of King Georges Road Interchange and a new interchange at St Peters. Visit westconnex.com.au/NewM5 for more information.

From **Tuesday, 13 September 2016**, work to locate underground utility services and test the existing road pavement will be carried out at the Unwins Bridge Road / May Street / Bedwin Road / Campbell Street intersection. A map showing this work location is provided overleaf.

This work will occur between **7.00 am and 6.00 pm from Monday to Friday and 8.00 am to 1.00 pm on Saturday** and is expected to take two weeks to complete, weather permitting.

The work will involve:

- scanning the ground
- excavating a small hole using high pressure water from a vacuum truck
- collecting samples of road pavement for testing
- traffic and pedestrian management to ensure the safety of motorists, pedestrians, cyclists and workers.

All worksites will be restored to their original condition after the work is completed.

Traffic changes

The work will involve some temporary changes to traffic conditions for the safety of road users, pedestrians, cyclists and workers, including:

- reduced speed limits
- stop/go arrangements
- short-term removal of street parking around the work area
- footpath diversions.

Traffic control and signage will be in place to assist local residents, road users, pedestrians and cyclists navigate through the work area. Property access will be maintained throughout the work.

If you have any questions or complaints about the work, please call 1800 660 248 and ask to speak to a member of the New M5 community engagement team or email info@newm5.com.au.

Reference: 127

ABOUT WESTCONNEX

WestConnex is part of a broader transport plan for Sydney which includes improved public transport, such as Sydney Metro and light rail, as well as better, more reliable motorway solutions. More than two-thirds of WestConnex will be built underground. Once complete, motorists will be able to avoid up to 52 sets of traffic lights and enjoy significant travel time savings.

For more information

✉ info@newm5.com.au
☎ 1800 660 248
🌐 westconnex.com.au
📱 [f](#) [t](#) [in](#)

Constructed by





Easing
congestion

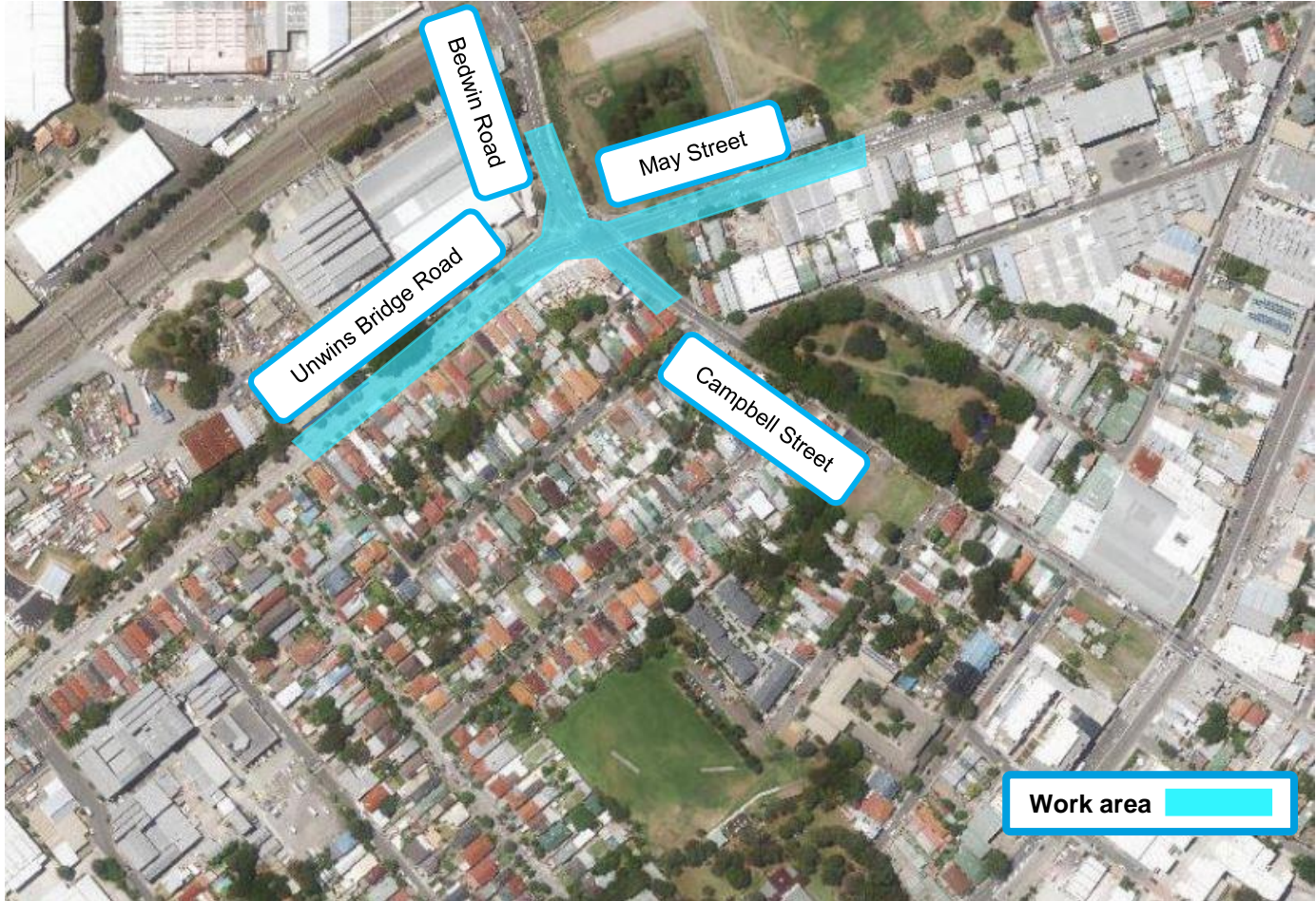


Creating
jobs



Connecting
communities

Location of investigation work at Unwins Bridge Road / May Street / Bedwin Road / Campbell Street intersection, St Peters



Map data © 2016 Google



We speak your language

ENGLISH

To learn more, simply visit westconnex.com.au/yourlanguage. Need an interpreter? Call the Translating and Interpreting Service on 131 450.

ARABIC

لمعرفة المزيد، ما عليك سوى زيارة westconnex.com.au/yourlanguage. بحاجة إلى مترجم؟ اتصل بخدمة الترجمة الكتابية والترجمة الشفوية على الرقم 131450.

CHINESE

如需了解更多详情，请访问 westconnex.com.au/yourlanguage。如需翻译，请拨打翻译与口译热线 131 450

GREEK

Για να μάθετε περισσότερα, απλά επισκεφθείτε το westconnex.com.au/yourlanguage. Χρειάζεστε διερμηνέα; Καλέστε την Υπηρεσία Μεταφραστών και Διερμηνέων στο 131 450.

HINDI

अधिक जानने के लिए केवल westconnex.com.au/yourlanguage पर देखें। क्या आपको दुभाषिए की ज़रूरत है? अनुवाद व दुभाषिया सेवा को 131 450 पर फ़ोन करें।

ITALIAN

Per saperne di più, vai semplicemente al sito westconnex.com.au/yourlanguage. Hai bisogno di un interprete? Chiama il servizio d'interpretazione e traduzione al numero 131 450.

KOREAN

더 자세히 알고 싶으시면, 바로 westconnex.com.au/yourlanguage 를 방문하시면 됩니다. 통역사가 필요하십니까? 번역 및 통역 서비스에 131 450으로 연락하십시오.

VIETNAMESE

Để biết thêm, chỉ cần tới trang mạng westconnex.com.au/yourlanguage. Cần thông dịch viên? Hãy điện thoại cho Dịch vụ Thông Phiên Dịch ở số 131 450.